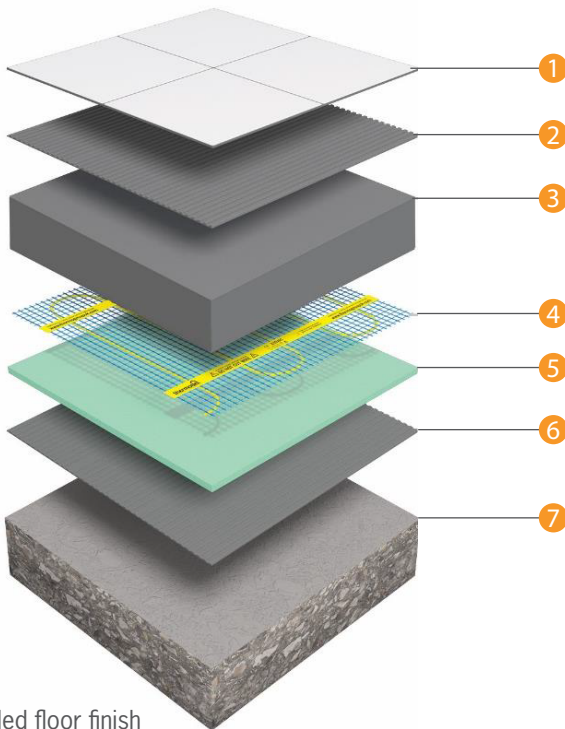


Thermonet 200W/m² TDB Kits

For Installation In Screed Up To 50mm Thick



- 1 Tiled floor finish
- 2 Flexible tile adhesive
- 3 Sand & cement screed
- 4 Thermonet 200W/m² heating mat
- 5 Econoboard uncoated insulation board
- 6 Flexible tile adhesive
- 7 Concrete substrate



Lifetime Warranty

We are so confident in the quality of Thermoscreed Underfloor Heating that we give each cable a warranty that lasts a Lifetime with 3 year warranty on the Thermostat.



In Screed heating

Suitable for installation in screeds of 20mm to 50mm, and is recommended to be fixed to insulation boards.



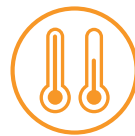
Full self adhesive mesh

The self adhesive mesh speeds up installation by holding Thermonet matting to the substrate for easy self levelling and tile fixing.



Heating cable protection

Thermonet is installed wire-side-down which means the heating cable is protected from damage during installation by the hard wearing mesh layer.



Perfect for high heat loss applications

The high heat output of the 200Watt mats makes them perfect for rooms which are prone to high heat loss. This can be further reduced by adding a layer of insulation below the heating.

Technical Data



Kit includes: Thermonet 200Wm² Mat, Dual Control Thermostat (5246 Black), Floor Temperature Sensor, Sensor Conduit, Fixing Tape, Cable Monitor, Installation Guide & Warranty Form.

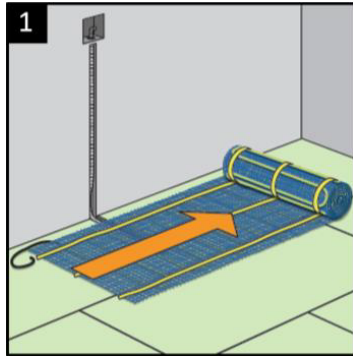
Width	500mm
Heated Width	430mm
Thickness	3.5mm
Max. Temperature	28°C*
Protection Rating	IP68
Warranty	Lifetime on heating mat
Wattage	200W/m ²
Conductor Type	Single Ended
Cold Tail Length	5m

* Regulated by floor sensing thermostat



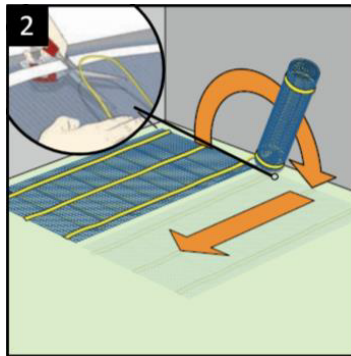
Installation Overview

Thermonet electric underfloor heating mat is quick and easy to install. This overview gives a guide to the basics. Always read the instructions in full before attempting your own installation.



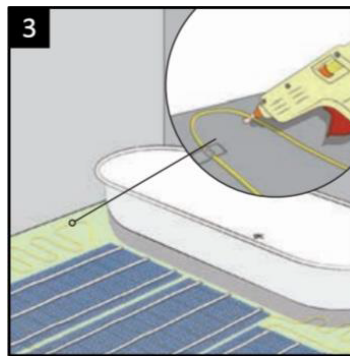
1 Roll out the mesh

The mesh should be laid wire side down



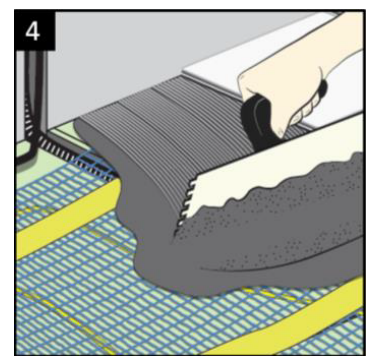
2 Cut the mesh (not the cable)

Turn the mesh 180° and continue rolling



3 Loose run for irregular areas

Remove the cable from the mesh, arrange and stick down



4 Laying the tiles

Use a flexible tile adhesive to fix tiles straight over the heating

Thermonet electric underfloor heating mat is quick and easy to install. This overview gives a guide to the basics. Always read the instructions in full before attempting your own installation.

Thermonet Mesh 200W/m² TDB Kits

Stock Code	Size (m)	Area (m ²)	Output (W)	Resistance (Ω)
112002TDB	2 x 0.5	1.0	200	265
112003TDB	3 x 0.5	1.5	300	176
112004TDB	4 x 0.5	2.0	400	132
112005TDB	5 x 0.5	2.5	500	106
112006TDB	6 x 0.5	3.0	600	88
112007TDB	7 x 0.5	3.5	700	76
112008TDB	8 x 0.5	4.0	800	66
112009TDB	9 x 0.5	4.5	900	59
112010TDB	10 x 0.5	5.0	1000	53
112012TDB	12 x 0.5	6.0	1200	44
112014TDB	14 x 0.5	7.0	1400	38
112016TDB	16 x 0.5	8.0	1600	33
112018TDB	18 x 0.5	9.0	1800	29
112020TDB	20 x 0.5	10.0	2000	26
112024TDB	24 x 0.5	12.0	2400	22